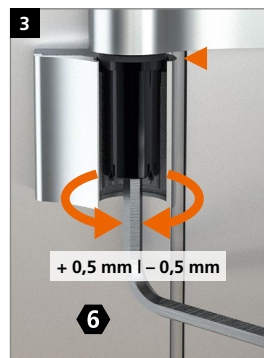
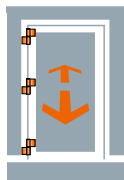




Verstellung der Bänder nur durch im Türenbau erfahrene Fachhandwerker.
Réglage et montage des paumelles uniquement par des professionnels qualifiés.
Adjustment and regulation only to be done by an experienced tradesman.

Dichtungsdruck verstellen · Régler la pression du joint d'étanchéité · Adjusting the sealing pressure



▶ - 0,5 mm



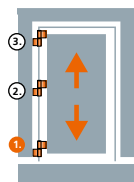
▶ 0 mm



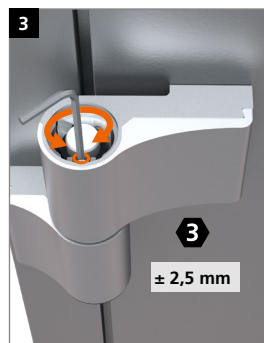
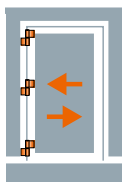
▶ + 0,5 mm



Höhenverstellung · Réglage en hauteur · Adjusting the height



Horizontalverstellung · Réglage horizontal · Horizontal adjustment



Wichtig: Gewindestift festziehen.
Important: Serrer la vis pointeaux.
Important: Tighten the setscrew.